



Conversational AI in Education

A trainer's ally: Unlocking
the potential of Generative
AI in learning practices.



Bring HealthTech Alive!

Platform Introduction

At Hale HIT Labs, we are proud to introduce a trainer's ally, a collaborative effort developed in partnership with our esteemed client. Our platform signifies a joint endeavour between subject matter experts and cutting-edge technology, aimed at revolutionizing educational practices. By leveraging Generative AI, trainer's ally seeks to enhance existing training methods, empowering trainers to deliver impactful and interactive learning experiences across diverse platforms.

Key Aspects of Efforts in Building the Platform

Collaborative Knowledge Base Construction

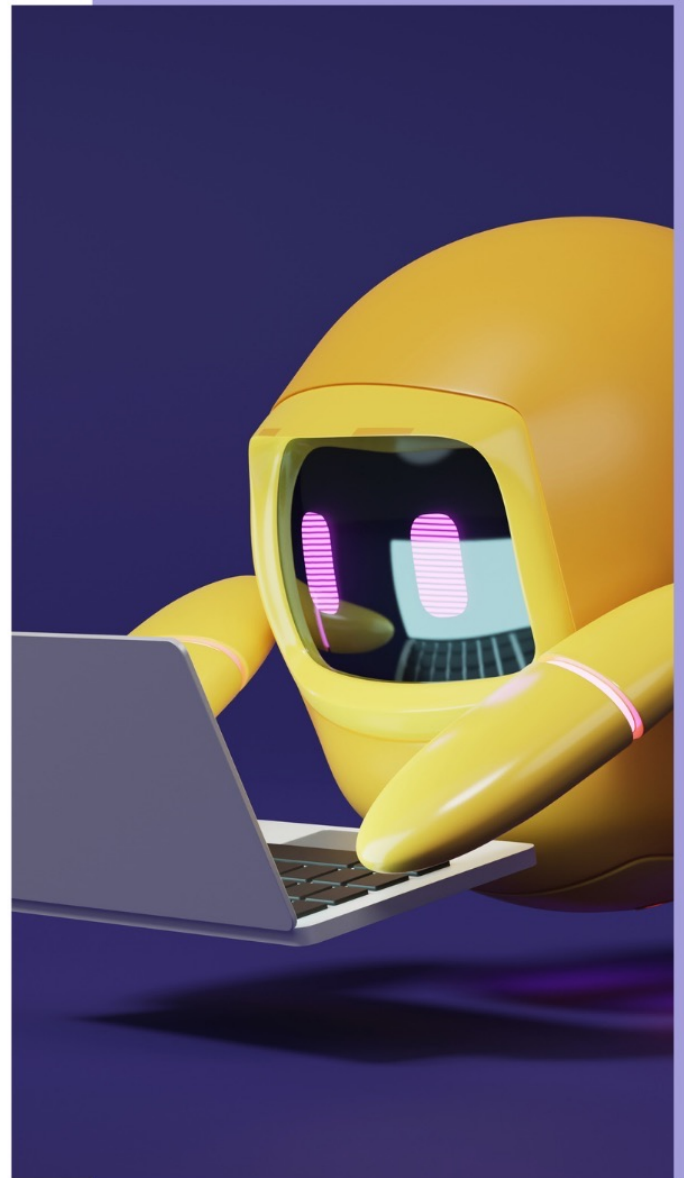
Our client's team of subject matter experts actively contribute to constructing a robust knowledge base. By consolidating and organizing data from various sources such as classroom sessions, online learning platforms, and messaging channels, Trainer's Ally captures real-world training scenarios effectively.

Automated Learning from Trainer Interactions

Powered by advanced Generative AI algorithms, Trainer's Ally autonomously learns from the extensive data generated by human trainers. Through ongoing analysis of Q&A sessions, classroom interactions, and multimedia content, our platform identifies patterns, trends, and best practices, enhancing its grasp of the subject matter.

Intelligent Chatbot Support

Central to Trainer's Ally is an intelligent chatbot driven by Generative AI. Our aim is to create a virtual assistant that offers personalized responses and guidance based on user inquiries and interaction histories. By emulating human conversation patterns, our chatbot fosters natural and engaging interactions with learners.



Continuous Knowledge Enrichment

With each interaction, Trainer's Ally continually refines its knowledge base by incorporating feedback and insights from trainers and learners. Through ongoing collaboration and data analysis, our platform ensures the relevance, accuracy, and currency of educational content, adapting to evolving training needs.

Challenges to be Addressed

While much progress has been made, our development roadmap includes several key features:

Automated Knowledge Acquisition:

- Trainer's Ally plans to automate knowledge acquisition from diverse training modalities and digital platforms. We'll ensure that by extracting valuable insights from trainer interactions in real-time, our platform enriches its knowledge base dynamically.

Multilingual and Image-Based Conversations:

- In anticipation of diverse user needs, Trainer's Ally will support multilingual conversations and image-based interactions. By promoting inclusivity and enhancing content comprehension, our platform aims to provide a seamless learning experience for all users.

Integration with Third-Party Systems:

- To ensure accuracy and reliability, Trainer's Ally will seamlessly integrate with third-party systems for data validation and enrichment i.e., corroborating data, facts, and knowledge. By leveraging external sources, our platform shall enhance the depth and credibility of responses, enriching the learning experience for users.



Conclusion

Trainer's Ally emerges as an interesting play in AI-driven education, looking to bridge the gap between human expertise and technological innovation. By harnessing the collective wisdom of subject matter experts and the capabilities of Generative AI, our platform shall empower trainers to unlock new horizons in teaching and learning. Together, we're geared up to shape the future of education, one interaction at a time.